



ISSN 2357-0725

<https://jsasj.journals.ekb.eg>

JSAS 2022; 7(2): 218-228

Received: 06-02-2023

Accepted: 10-02-2023

Abd-Elgalil, A.**Ibrahim, M. S.****Mustafa, A. A.****Ghada, K. Ibrahim**

Soil and Water Department

Faculty of Agriculture

Sohag

University

Sohag

82524

Egypt

Corresponding author:**Ghada, K. Ibrahim**ghadakhail2344@gmail.com

Assessment the Effect of Nano and traditional Nitrogen Fertilizers on Lettuce Grown in Sandy Soil

Abd-Elgalil, A., Ibrahim, M. S., Mustafa, A. A. and Ghada, K. Ibrahim

Abstract

A pot experiment was conducted in sandy soil to assess the effect of Nano Nitrogen loaded on modified zeolite and traditional fertilizers on lettuce. treatments of 100, 75, 50 and 25% of the recommended dose of common N fertilizer and 100, 75, 50 and 25 ml of 1000 ppm Nano N solution were added alone or in combination with the traditional fertilizers to lettuce plants. Vegetative growth and yield characters were recorded. The obtained results indicated that the application of N-Nano resulted in significantly higher vegetation growth parameters such as plant fresh weight (PFW), shoot fresh weight (SFW), plant length (PL), leaf area (LA) and plant dry weight. The partial replacement of common N fertilizers by additional of Nano fertilizers to lettuce plants production could be a useful way to save the amount of common N fertilizers and enhancement of plant growth and increasing nutrients uptake by plants and to avoid nitrate leaching especially under sandy soils and consequently reducing pollution problems.

Keywords

Lettuce, Vegetative growth parameters, Nano-N fertilizers, Traditional fertilizers.

INTRODUCTION

Lettuce (*Lactuca sativa L.*), is an important leafy vegetable grown in Egypt for local consumption and export with leaves of high moisture, minerals and vitamins A, B, C and K (Khalil *et al.*, 2016 and Elings and Raza, 2017). Therefore, increasing production of such crop is becoming a national target to save the food security for the annually increased population. In addition, the gap between the quantity used for food and the domestic production is still big. The newly reclaimed soils that are sandy soils are very poor in their organic matter contents, plant nutrient levels. Crops cultivated in such soils need to apply fertilizers especially nitrogen fertilizers which can improve the yield and quality of crops.

Nitrogen is essential for plant growth (Liu and Lal, 2015) and involved in important syntheses and formation of many important substances and compounds plant such as amino acids, enzymes, DNA, RNA and chlorophyll (Khalil *et al.*, 2016), therefore it must be available for plants in adequate amounts. Yield of lettuce and weight per lettuce head depend on the amount of N available for the crop (Hosseney and Ahmed, 2009) but the amount must be adequate not excessive (Liu *et al.*, 2014). Excessive application of N to crops in general leads to unwanted environmental consequences including accumulation of high nitrate and nitrite contents leafy vegetables and fruits, among other problems such as eutrophication, environmental contamination in underground waters used for drinking (Wang *et al.*, 2002 and Bobbink *et al.*, 2012). Nitrates and nitrites may accumulate in edible plant tissues particularly in leafy vegetables (Wang *et al.*, 2002), especially lettuce with contents of up to 2500 mg NO₃-N kg⁻¹ fresh weight (Dapoigny *et al.* 2000). Consumption of such plants causes detrimental effects on health (Ahmadil *et al.*, 2010). To avoid application of excessive rates of N to crops, particularly the edible leafy ones, foliar spray of N as urea is preferred (Mondal and Mamun, 2011), particularly when in nano forms, a technique which proved effective for plant nutrition due to its high absorption and utilization efficiency by plants (Mondal and Mamun, 2011 and Manjunatha *et al.*, 2016). Foliar spray usually uses low amounts of fertilizer N (Gul *et al.*, 2011), and urea is a source

of N with high concentration of N nutrient (Abu-Rayyan *et al.*, 2004 and PEI, 2014). Also, it can be used as foliar spray on plant with no scorching damage on leaves compared with fertilizers of salt nature (Mondal and Mamun, 2011). The use of nano-scale nitrogen as foliar fertilization showed preference to the traditional methods (Manjunatha *et al.*, 2016). Nano particle of any material are particles with extremely small size of less than 100 nm Ø (DeRosa *et al.*, 2010). Nano-fertilization is gaining popularity since it proved practical and highly effective (DeRosa *et al.*, 2010, EL-Aila *et al.*, 2015 and Manjunatha *et al.*, 2016).

From all the above-mentioned facts, the current study objective was formulated to assess Effect of Nano and traditional Nitrogen Fertilizers on Lettuce Grown in Sandy Soil.

MATERIALS AND METHODS

1. The experimental site and soil properties

A sandy soil sample was collected from the soil surface (0-30 cm) of the new reclaimed soil of agriculture farm, Sohag University at New Sohag city which is located at the western border of the Nile valley (26°27'38.1" N and 31°39'50.6" E) about 15 km south-west of Sohag city. The soil samples thus collected were shade dried, gently ground with a wooden mallet and sieved through 2 mm sieve and stored in polyethylene bags. These samples were analyzed for pH, EC, organic matter, calcium carbonate%, available nutrients N, P, K, Ca, Mg, Fe, Mn, Zn and Cu, Particle size distribution, soil texture, cations and anions The analytical methods followed for analysis are given in Table (1).

2. Experimental design and treatments:

A Complete randomized pot experiment in the three replicates was carried out in the green house of agriculture farm, Sohag University at New Sohag city. The plastic pots have a diameter of 30 cm and a depth of 20 cm and were filled with 8 kg of dried soil. Lettuce (*Lactuca sativa L.*) plants were transplanting in winter season (17th Nov. 2020) and harvested in (17th Feb. 2021).

2.1. Traditional –fertilizers

The traditional fertilizers were applied as recommended rates according to the Ministry of Agriculture and Land Reclamation at (60 kg N fed-1) as ammonium nitrate (33.5% N), (15 kg P fertilizer fed-1) as super phosphate (15.5 % P₂O₅) and potassium fertilizer (50 kg K fed-1) as potassium sulphates (48 % K₂O) as the source of N, P and K respectively. Each treatment was at the rates of 25, 50, 75 and 100 % from the recommended dose. Ammonium nitrate fertilizer was added in three doses after 15, 30 and 45 days from planting, the super phosphate was added to the soil before planting and after 15 day from planting, while the potassium sulphates was added to the soil after 30 and 45 days from planting.

2.2. Nano –fertilizers

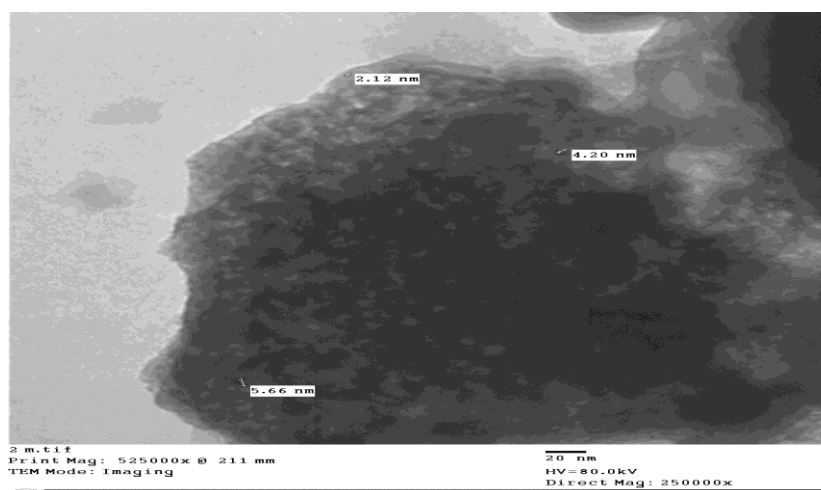
Nano -fertilizers were brought from the Agricultural Research center (ARC), Soil, Water and Environment institute (SWERI), Giza, Egypt. Treatments consist of Nano- N fertilizer (25, 50, 75 and 100 mg l-1). The size of Nano fertilize was Examined at Faculty of Agriculture, Cairo university, Egypt - by transmission electron microscope JEOL (JEM-1400TEM) at the candidate magnification. Images were captured by CCD camera model AMT, optronics camera with 1632 x 1632 pixel format as side mount configuration. This camera uses a 1394 fire wire board for acquisition (Image1). Details of each excrement treatments are shown in (Table 2).

Table (1) The physical and chemical analysis of the experimental soil.

Soil property	Values
<u>Particle size distribution</u>	
Sand (%)	92.16
Silt (%)	2.73
Clay (%)	5.11
Texture grade	Sandy
pH (1:2.5)	7.88
CaCO ₃ (%)	2.17
O.C (%)	0.11
EC _e (dS/m)	0.35
<u>Soluble cations (meq/l):</u>	
Ca ⁺²	1.40
Mg ⁺²	0.60
Na ⁺	1.17
K ⁺	0.26
<u>Soluble anions (meq/l):</u>	
CO ₃ ⁻	-
HCO ₃	2.00
Cl ⁻	1.00
SO ₄ ⁻	0.44
Available N (mg kg ⁻¹)	40.00
NH ₄ OAc- extractable K (mg kg ⁻¹)	91.70
NaHCO ₃ - extractable P (mg kg ⁻¹)	3.21
DTPA- extractable Fe (mg kg ⁻¹)	4.13
DTPA- extractable Mn (mg kg ⁻¹)	1.76
DTPA- extractable Zn (mg kg ⁻¹)	0.93
DTPA- extractable Cu (mg kg ⁻¹)	0.28

Table (2) The treatments of the investigated study.

T₁	100% N _{traditional} +100% P _{traditional} +100% K _{traditional}
T₂	75% N _{traditional} +100% P _{traditional} +100% K _{traditional}
T₃	50% N _{traditional} +100% P _{traditional} +100% K _{traditional}
T₄	25% N _{traditional} +100% P _{traditional} +100% K _{traditional}
T₅	
T₆	100% N _{nano} +100% P _{nano} +100% K _{nano}
T₇	75% N _{nano} +100% P _{nano} +100% K _{nano}
T₈	50% N _{nano} +100% P _{nano} +100% K _{nano}
T₉	25% N _{nano} +100% P _{nano} +100% K _{nano}
T₁₀	75% N _{traditional} +25% N _{nano} +100% P _{traditional} +100% K _{traditional}
T₁₁	50% N _{traditional} +50% N _{nano} +100% P _{traditional} +100% K _{traditional}
T₁₂	25% N _{traditional} +75% N _{nano} +100% P _{traditional} +100% K _{traditional}

**Image (1)** Nano particles of nitrogen ranges between 8.63 and 23.4 nm.

3. Recorded data

3.1 Vegetative growth

Plant fresh weight (g): The whole plant was weighed including leaves and root.

Shoot fresh weight (g): Leaves were weighed after removing the root.

Root weight (g): The root was weighed after separating from the leaves.

Root length (cm): The root of the plant was measured in centimeters.

Plant length (cm): Plant length was measured from the tip of the leaves to the end of the root.

Leaf area index (cm²): was determined by the dry weight method using a disc known area (4 cm²).

$$\text{Leaf Area (LA)} = \frac{X}{Y} \times m$$

Where x and y represent the leaf segment area (cm²) and its dry weight (g) respectively, while m represents the weight (g) of the entire leaf (Kaushik *et al.* , 2021).

Dry matter production of plant (%).

The samples were shade dried initially and then dried in hot air oven at 70°C till attained constant weight. From the dried samples the dry matter production (DMP).

$$DM \% = \frac{\text{Sample fresh weight} - \text{Sample dry weight}}{\text{Sample fresh weight}} \times 100$$

Chlorophyll content (mg/cm²).

Chlorophyll content (mg/cm²) was measured using SPAD chlorophyll meter, and convert its reading to (mg/cm²) according the formula described by Dash *et al.* (2007) as following:

$$Y = 0.118 x^2 + 0.919 x + 7.925$$

Where: y = chlorophyll concentration (mg cm⁻²) and x = SPAD reading.

4. Statistical Analysis

The measured data were subjected to analysis of variance in completely randomized design using SAS software (SAS ver. 9.2, SAS Institute 2008), according to Gomez and Gomez (1984). The least significant Differences (LSD) between means for studied parameters analysis, were estimated according to (Snedecor and Cochran, 1989). The correlation coefficient analysis were analyzed for all studied parameters in SAS ver. 9.2.

RESULTS AND DISCUSSIONS

Effect of treatments on growth characteristics of lettuce

Various observations of the experiment with the direct test crop of lettuce are presented in the table 3 and demonstrated in Figures from (1) to (8). Various growth attributes of crop viz., plant fresh weight, shoot fresh weight, plant length, root weight root length, leaf area, and plant dry weight and Chlorophyll content were recorded and presented.

Table (3) Effectiveness of N Nano -fertilizers and their bulk on the vegetative growth of lettuce (*Lactuca sativa* var. Roman) plants.

N-Traditional								
	PFW (g)	SFW (g)	PL (cm)	LA (cm ²)	PDW (g)	RW (g)	RL (cm)	CC (mg/cm ²)
100%	248.06 ^{BA}	230.57 ^{BA}	20.69 ^B	148.7 ^A	16.88 ^A	16.83 ^A	14.25 ^A	246.3 ^B
75%	263.25 ^A	248.94 ^A	21.88 ^A	125.57 ^B	14.93 ^B	14.04 ^{BA}	10.75 ^B	259.74 ^B
50%	237.15 ^{BA}	223.82 ^{BA}	21.38 ^A	143.88 ^A	14.6 ^B	9.93 ^{BA}	12.38 ^{BA}	262.95 ^A
25%	203.77 ^B	195.14 ^B	21.38 ^A	147.44 ^A	15.88 ^A	8.08 ^B	11 ^{BA}	274.42 ^A
LSD 5%	46.83	43.57	0.58	18.09	1.85	7.32	3.33	15.93
N-Nano								
100%	278.12 ^A	258.03 ^A	22.50 ^B	154.88 ^B	15.42 ^A	19.64 ^A	11.75 ^B	219.06 ^A
75%	257.52 ^B	241.73 ^B	21.75 ^B	143.55 ^B	14.61 ^B	15.39 ^{BA}	11.88 ^B	203.45 ^B
50%	277.06 ^A	260.40 ^A	23.75 ^A	159.56 ^A	15.46 ^A	16.07 ^{BA}	13.38 ^A	227.71 ^A
25%	256.96 ^B	244.09 ^A	22.25 ^B	175.60 ^A	14.79 ^A	12.98 ^B	12.25 ^A	231.12 ^A
LSD 5%	19.69	13.82	1.20	18.32	0.66	5.93	1.43	17.28
N-Mixed								
75%	264.55 ^A	252.74 ^A	21.88 ^B	175.53 ^A	14.77 ^A	11.62 ^{BA}	12.0 ^A	216.82 ^A
50%	248.36 ^A	238.17 ^A	23.00 ^A	119.09 ^B	13.70 ^{BA}	10.12 ^B	11.5 ^B	193.41 ^B
25%	231.53 ^B	218.09 ^B	21.88 ^B	168.79 ^A	12.04 ^B	13.17 ^A	11.1 ^B	191.70 ^B
LSD 5%	18.67	16.85	0.82	28.76	2.20	2.35	0.73	21.54

Plant fresh weight (PFW)

The plant fresh weight (PFW) of lettuce plants ranged from (203.77 g pot⁻¹) for 25% N-traditional to (277.06 g pot⁻¹) for the treatment of 50% N- Nano. The obtained result showed that application of N Nano and N-mixed resulted in significantly higher (PFW) per pot (figure 1). In addition, the same trend was observed in straw fresh weight. This results are in full agreement with the findings obtained by Li *et al.* (2013) who reported that using ammonium- and potassium-loaded zeolite (NK-Z) as carriers for fertilizer and for slow released nitrogen (N) increased the total

harvest weight and the leaf fresh weight of kale (*Brassica alboglabra* Bailey).

Shoot fresh weight (SFW)

The shoot fresh weight recorded at final harvest of direct test crop of pot experiment is presented in table (3) and figure (2). The treatments imposed exhibited significant influence on shoot fresh weight of plants. The maximum (SFW) of plants per pot (260.40 g pot⁻¹) was recorded in the treatment of 50% N-Nano. Whereas, the treatment of 25% N-traditional fertilizer gave the lowest shoot fresh weight per pot. The results showed that application of N Nano

significantly increased the SFW per pot. These results were coincidence with the results obtained by (Li *et al.*, 2018; El-Henawy *et al.*, 2018 and Al-Juthery *et al.*, 2019).

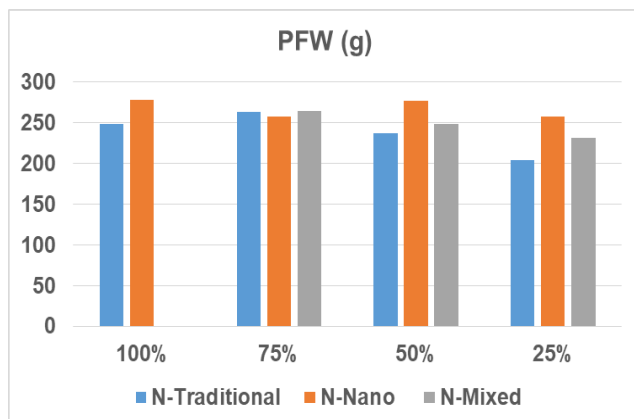


Figure (1) Effect of different treatments on PFW of lettuce.

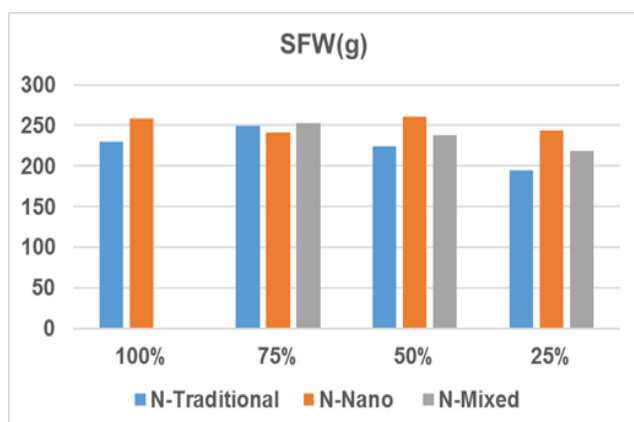


Figure (2) Effect of different treatments on SFW of lettuce.

Plant dry weight (PDW)

All treatments exhibited significant influence on plant dry weight (PDW). The results of plant dry weight production as influenced by the different treatments are presented in table 3 and figure (3). The 100% N-traditional was significantly superior to all other treatments which recorded a value of (16.88 g pot⁻¹). The lowest (PDW) was recorded in the treatment of 25% N-Nano with a value of (12.04 g pot⁻¹). The growth attributes of lettuce plant were increased by the application of nitrogen in Nano form because nitrogen use efficiency was increased and consequently the chlorophyll contents were increased. In addition, Chlorophyll contents

enhanced the rate of photosynthesis, increased the accumulation of glucose and improved fresh and dry weight of plants (Eleiwa *et al.*, 2012 and Elhindi *et al.*, 2016).

Root weight (RW) and Root length (RL)

The data on root length and weight is given in the table (3) and figures (4 and 5). Statistically significant difference was observed among treatments at the harvest of lettuce crop. At the end of experiment the 100% N-Nano showed highest value of root weight with a recorded value of (19.64 g pot⁻¹) and lowest root weight was found in 25% N-traditional (8.08 g pot⁻¹). Significant values were recorded for root length was at the end of experiment. The highest (RL) of plants were observed in the 50% N-Nano (13.38 cm). The lowest value of root length (10.75 cm) was recorded in 100% N-traditional.

Abdel-Aziz *et al.* (2016) noticed that treatment supplied with 10 percent Nano NPK exhibited an increase in root length, shoot length, plant height, leaf area, in wheat when compared with conventional fertilizer and control. Gerdini (2016) pointed out that foliar application of potassium Nano fertilizer applied at 2.5 ml l⁻¹ resulted in improved plant height, number of branches per plant, fresh weight, dry weight and also increased the tolerance to pest and diseases under the drought conditions. Finally the obtained results were showed that Nano N fertilizer had a favorable effect on lettuce growth comparing to the traditional ammonium nitrate. The smaller particles size and the high specific surface areas of the Nano - fertilizers could be the reason due to their higher dissolution rate and extent in water/soil solution than the related bulk solids from traditional fertilizers (Liu and Lal, 2015). Furthermore, to enhance the fertilizer use efficiency, essential nutrients were applied in Nano form and improved the plant growth. Fertilizer use efficiency significantly enhanced by the application of nutrients in Nano form because Nano - fertilizers once enters the plant, bind with carrier proteins like aquaporin, ion channels and endocytosis (Schwab *et al.*, 2016). This behavior of Nano - fertilizers lead to the formation of new openings that penetrate the cell wall and stimulate the absorption of water and other essential nutrients that encourage the growth of plant (Abyaneh and

Maryam, 2014). It was reported that non fertilizers were more effective and efficient than the traditional fertilizers due to their positive effects on the growth, quality nutrition of crops and as well as reduced the stress in plants (Morales-Diaz et al., 2017).

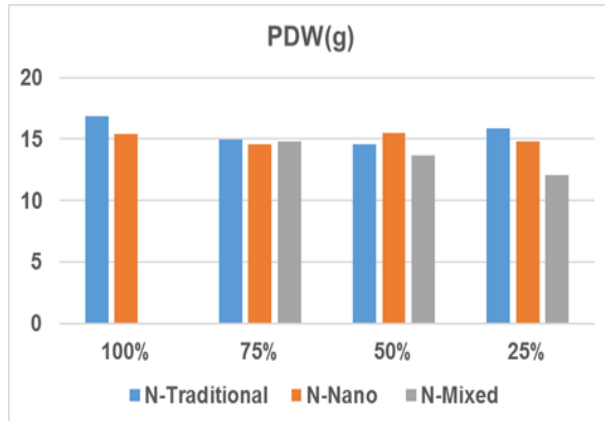


Figure (3) Effect of different treatments on PDW of lettuce.

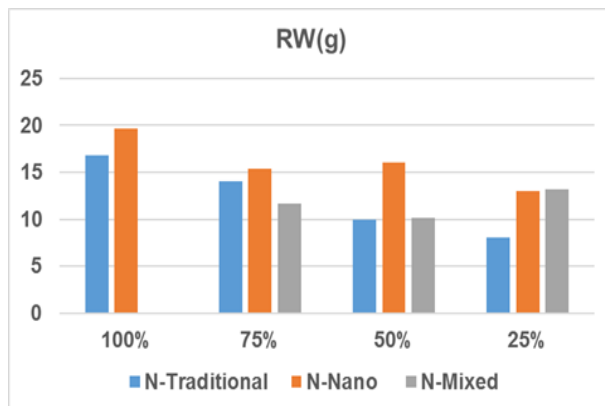


Figure (4) Effect of different treatments on RW of lettuce.

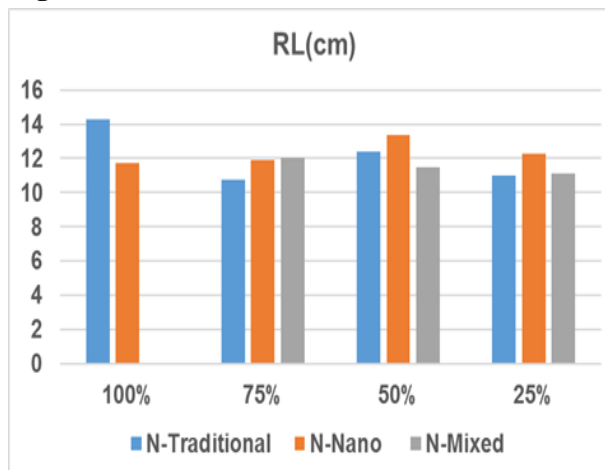


Figure (5) Effect of different treatments on RL of lettuce.

Plant length (PL)

Data in tables (3) and Figure (6) revealed that with N fertilizer application. The highest (PL) was found in 50% N-Nano (23.75 cm), On the other hand, the application of 100% of N-traditional resulting in the decrease of (PL). The mean values of plant length were significantly greater in the case of N-Nano fertilization than the other N treatments. The data were harmony with the results of Saleem *et al.* (2020) who indicated that potassium ferrite (KFeO₂) Nano coated diammonium phosphate (DAP) fertilizer (recommended NP +10% KFeO₂ Nano -coated DAP) boosted wheat plant height, shoot fresh and dry weight. In addition, Valojai *et al.* (2021) showed that application of conventional and Nano -fertilizers, particular in NPK, Nano NPK and its combination (NPK + Nano NPK) led to get highest grain yield quality in rice and milled rice.

Leaf area (LA)

The different treatments imposed significantly influenced the leaf area of lettuce test crop and the results are presented in tables (3) and figure (7). The highest value of (LA) was recorded in 25% N-Nano treatment (175.60 cm²). While the lowest one (119.09 cm²) was observed in 50%N-mixed treatment. Similarly, leaf area was significantly varied with the effect of different treatments. The average of leaf area was significantly greater in the case of Nano nitrogen, than the other treatments. The results were coordinated with Nofal *et al.* (2021) who reported that soil application of Nano NPK at the rates of (0, 12.5, 25, 50 %) of the recommended dose significantly boosted the vegetative growth such as plant fresh weight, leaf area head fresh weight, head size, firmness, total yield and in demand yield. Also, Moosapoor *et al.* (2013) reported that foliar application of Nano - fertilizers play a significant role in photosynthesis, increased leaf area and consequently increased yield.

Chlorophyll content (CC)

The effect of treatments on chlorophyll content was found to be significant during crop growth. The details of chlorophyll content were given in the tables (3) and figure (8). At the harvest, maximum chlorophyll content (274.42 mg cm⁻²) was recorded on 25%N-traditional. At the end

of experiment the average of results indicated that the highest chlorophyll content (260.90 mg cm², 250.62 mg cm², 214.54 mg cm²) was followed by NPK-traditional respectively. Minimum content of total chlorophyll (TCC) (200.60 mg cm², 179.25 mg cm², 174.80 mg cm²) was reported on NPK-mixed. Among the all treatments the total chlorophyll content the treatment of 25% K-mixed (25% K-traditional +75% K-Nano) showed the lowest content of chlorophyll. Alzreejawi and Al-Juthery (2020) reported the significant advantage of Nano NPK (12-12-36) spray in reaching the highest means for all studied indicators on maize plant (*Zea mays L.*) contained within chlorophyll at ease in leaves (SPAD unit), plant height (m), stem diameter (cm), biological yield (ton h⁻¹), grains yield (ton h⁻¹), harvest index (%).

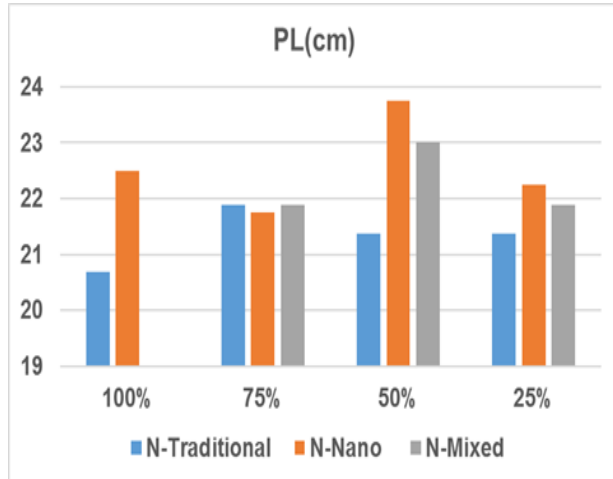


Figure (6) Effect of different treatments on PL of lettuce.

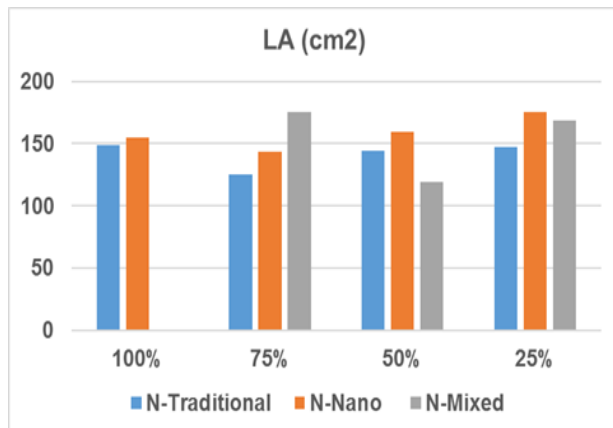


Figure (7) Effect of different treatments on LA of lettuce.

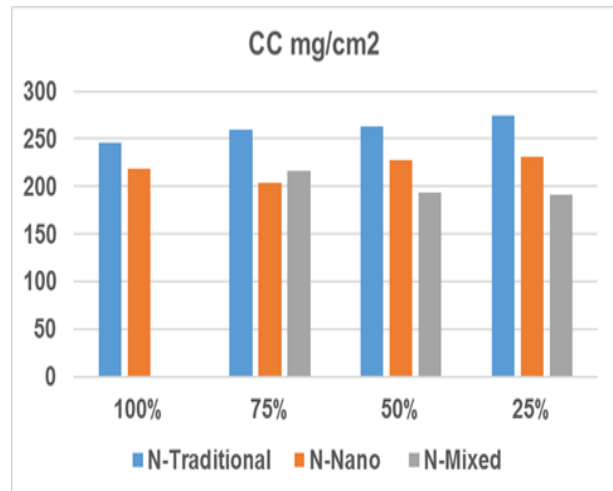


Figure (8) Effect of different treatments on CC of lettuce.

CONCLUSION

Nanotechnology contributes a significant boost for food production. The shortage of fresh water can be managed by adopting different efficient irrigation methods, also promote the quality and quantity of agricultural crops. By keeping in view, the above all, pot experiment was recommended for lettuce high growth, yield and quality. The application of N in Nano forms not only increase the fertilizer use efficiency at lower dose than recommended, also reduce the extra losses and environmental contamination. The best results were obtained when the plants were fertilized by different rates of N demand as foliar application in Nano form tracked by different rates of mixture Nano forms and bulk fertilizers and the application in bulk form N fertilizers in Nano form at different rates as foliar application. Foliar application of Nano NPK is significantly enhancing the growth parameters.

REFERENCE

- Abdel-Aziz, H. M. M., Hasaneen, M. N. A. and Omer, A. M. (2016). Nano chitosan-NPK fertilizer enhances the growth and productivity of wheat plants grown in sandy soil. *Egypt Journal of Botany*. 58 (1): 87- 95.
- Abu-Rayyan A., Kharawish B.H., and Al-Ismail K. (2004). Nitrate content in lettuce (*Lactuca sativa L.*) heads in relation to plant spacing, nitrogen

- form and irrigation level. *J. Sci. Fd. Agric.* 84:931- 936.
- Abyaneh, H. A. and Maryam, B. (2014). The effect of Nano -fertilizers on nitrate leaching and its distribution in soil profile with an emphasis on potato yield. *Nano science and Nano technology.* 8:198-207.
- Ahmadil H., Akbarpour V., Dashti F., and Shojaeian A. (2010). Effect of different levels of nitrogen fertilizer on yield, nitrate accumulation and several quantitative attributes of five Iranian spinach accessions. *Amer. Euras. J. Agric. Environ. Sci.* 8(4):468-473.
- El-Aila H.I., EL-Sayed S.A.A, and Yassen A. A. (2015). Response of spinach plants to nanoparticles fertilizer and foliar application of iron. *International J. Environ.*, 4(3):181-185.
- Al-Juthery, H. W. A. and Al-Shami, Q. M. N. (2019). The Effect of Fertigation with Nano NPK Fertilizers on Some Parameters of Growth and yield of potato (*Solanum tuberosum L.*). *Al-Qadisiyah Journal For Agriculture Sciences.*9(2): 225-232.
- Alzreejawi, S. A. M. and Al-Juthery, H. W. A. (2020). Effect of Spray with Nano NPK, Complete Micro Fertilizers and Nano Amino Acids on Some Growth and Yield Indicators of Maize (*Zea mays L.*). 1st Scientific International Virtual Agricultural Conference. *IOP Conference. Series: Earth and Environmental Science.* (Vol. 553, No.1,p.012010). doi:10.1088/1755-1315/553/1/012010.
- Bobbink R., Bal D., Van Dobben H.F., Jansen A.J.M., Nijssen M., Siepel H., Schamineé J.H.J., Smits N.A.C., and De Vries W. (2012). The effects of nitrogen deposition on the structure and functioning of ecosystems P. 39-71 In: Smits N.A.C., and Bal D. (eds), Recovery strategies for nitrogen-sensitive habitats. A Alterra ageningen ur & natura 2000 programme directorate of the ministry of economic affairs, agriculture and innovation, EU.
- Dapoigny L., De-Tourdonnet S., Roger-Estrade J., Jeuffroy M., and Fleury A. (2000). Effect of nitrogen nutrition on growth and nitrate accumulation in lettuce (*Lactuca Sativa L.*), under various conditions of radiation and temperature. *Agronomie* 20:843–855.
- Dash, J., Curran, P. J., Tallis, M. J., Llewellyn, G. M., Taylor, G. and Snoeij, P. (2007). The relationship between the MERIS terrestrial chlorophyll index and chlorophyll content. *Second ENVISAT Symposium, European Space Agency*. Noordwijk, ESA, SP-636 (CD-Rom).
- DeRosa, M. C., Monreal, C., Schnitzer, M., Walsh, R. and Sultan, Y. (2010). Nanotechnology in fertilizers. *Nature Nano technology.* 5(2), 91-91.
- Eleiwa, M. E., Ibrahim, S. A. and Mohamed, M. F. (2012). The combined effect of NPK levels and foliar nutritional compounds on growth and yield parameters of potato plants (*Solanum tuberosum L.*). *African Journal of Microbiology Research.* 6:5100-5109.
- El-Henawy, A., El-Sheikh, I., Hassan, A., Madein, A., El-Sheikh, A., El-Yamany, A., Radwan, A., Mohamed, F., Khamees, M., Youssef, S. and Salah, E. D. F. (2018). Response of cultivated broccoli and red cabbage crops to mineral, organic and Nano -fertilizers. *Environment, Biodiversity and Soil Security.* 2, 221 – 231.
- Elhindi, K., El-Hendawy, S., Abdel-Salam, E., Elgorban, A. and Ahmed, M. (2016). Impacts of fertigation via surface and subsurface drip irrigation on the growth rate, yield and flower quality of *Zinnia elegans*. *Brigantia.* 75:96 - 107.
- Elings, A. and Raeza, E. (2017). Protected horticulture in Egypt: A study on the technology of protected cultivation in Egypt. *Report WPR-704. Wageningen University & Research, BU Greenhouse Horticulture. Netherlands Enterprise Agency.*
- Gerdini, F. (2016). Effect of Nano potassium fertilizer on some parchment pumpkin (*Cucurbita pepo*) morphological and physiological characteristics under drought conditions. *Intl. J. Farm Alli Science.*5, 367–371.
- Gomez K. A. and A. A. Gomez (1984). Statistical Proceduress for Agriculture Research. *John Wiley and Sons.* Inc. New York.
- Gul H., Said A., Saeed B., Mohammad F., and Ahmad I. (2011). Effect of foliar application of nitrogen, potassium and zinc on wheat growth. *ARPJ. Agric. Biol. Sci.*, 6(4):56-58.
- Guo, H., White, J. C., Wang, Z., and Xing, B. (2018). Nano -enabled fertilizers to control the release and use efficiency of nutrients *Current Opinion in Environmental Science & Health.* 6:77–83.
- Hosseney M.H., and Ahmed M.M.M. (2009). Effect of nitrogen, organic and bio fertilization on

- productivity of lettuce (cv. Romaine) in sandy soil under Assiut conditions. *Ass. Univ. Bull. Environ. Res.* 12(1):79-93.
- Kaushik, P. P., Pati, K., Khan, M. L. and Khare, P. K. (2021). A quick and simple method for estimating leaf area by leaf weight. *International Journal of Botany Studies* . 6 (6) : 1286 – 1288 .
- Khalil, M. A. I., Mohsen, A. A. M. and Abdel-Fattah, M. K. (2016). Effect of bio and mineral nitrogen fertilization on growth, yield and quality of lettuce plants under sandy soil conditions. *Middle East Journal of Applied Sciences.* 6 (2):411-417.
- Li, P., Lu, J., Wang, Y., Wang, S., Hussain, S., Ren, T., Cong, R. and Li, X. (2018). Nitrogen losses, use efficiency, and productivity of early rice under controlled-release urea efficiency, and productivity of early rice under controlled-release urea. *Agriculture, Ecosystems and Environment.* 251 (1): 78-87.
- Li, Z., Zhang, Y., and Li., Y. (2013). Zeolite as slow release fertilizer on spinach yield and quality in a greenhouse test. *Journal of Plant Nutrient.* 36 (10): 1496-1505.
- Liu, R. and R. Lal. (2015). Potentials of engineered Nano particles as fertilizers for increasing agronomic productions. *Science of the Total Environment.* 514:131- 139.
- Liu C.V., Sung Y., Chen B., and Lai H. (2014). Effects of nitrogen fertilizers on the growth and nitrate content of lettuce (*Lactuca sativa* L.). *Int. J. Environ. Res. Public Health* 11(4):4427-4440.
- Manjunatha S.B., Biradar D.P., and Aladakatti Y.R. (2016). Nanotechnology and its applications in agriculture: A review. *J. Farm Sci.* 29(1):1-13.
- Mondal A., and Mamun A. (2011). Effect of foliar application of urea on the growth and yield of tomato. *Front. Agric. China* 5(3): 372–374.
- Moosapoor, N., Sadeghi, S. M. and Bidarigh, S. (2013). Effect of boron Nano - fertilizer and chelated iron on the yield of peanut province guilan. *Indian Journal of Fundamental and Applied Life Science.* 3:45-62.
- Morales-Díaz, A. B., Ortega-Ortíz, H., Juárez-Maldonado, A., Cadenas-Pliego, G., González-Morales, S., and Benavides-Mendoza, A. (2017). Application of Nano elements in plant nutrition and its impact in ecosystems. *Advances in Natural Sciences: Nano science and Nano technology.* 8(1), 013001.
- Nofal, A. S., Ashmawi, A. E., Mohammed, A. A., El- Abd, M. T. and Helaly, A. A. (2021). Effect of soil application of Nano NPK fertilizers on growth, productivity and quality of Lettuce (*Lactuca sativa*). *Al-Azhar Journal of Agricultural Research* V. (46) No. (1) 91-100.
- PEI, Analytical Laboratories Soil Testing (2014) Urea fertilizer in crop production. 23 Innovation Way Charlottetown, PEC1E 0B7, Canada.
- Saleem, I., Maqsood, M. A., Aziz, T., Bhatti, I. A. and Abdul Jabbar (2021). Potassium ferrite Nano coated DAP fertilizer improves wheat (*Triticum aestivum* L.) growth and yield under alkaline calcareous soil conditions. *Pakistan Journal of Agricultural Sciences.* 58(2):485-492.
- SAS Institute (2008). The SAS system for Windows, release 9.2.SAS Institute, Cary, N.C. USA.
- Schwab, F., Zhai, G., Kern, M., Turner, A., Schnoor, J. L., and Wiesner, M. R. (2016). Barriers, pathways and processes for uptake, translocation and accumulation of Nano materials in plants–Critical review. *Nano toxicology.* 10(3), 257-278.
- Snedecor, G. W. and Cochran, W. G. (1989). *Statistical Method.* 8th ed . Iowa State University Press, Ames, USA. Institute, Cary, N.C. USA.
- Valojai, S. T. S., Niknejad, Y. and Tari, D. B. (2021). Response of rice yield and quality to Nano -fertilizers in comparison with conventional fertilizers. *Journal of Plant Nutrition.* 44(13): 1971 -1981.
- Wang Z.H., Zong Z.Q., Li S.X., and Chen B.M. (2002). Nitrate accumulation in vegetables and its residual in vegetable fields. *Environ. Sci.* 23(3):79–83.

تقييم أثر أسمدة النيتروجين النانو والتقليدي على الخس النامي في أراضي رملية

على عبد الجليل، محمد سليمان ابراهيم، عبد الرحمن عبد الواحد
مصطفى، غادة خليل ابراهيم

قسم الاراضي والمياه، كلية الزراعة، جامعة سوهاج، مصر

المخلص العربي

يهدف هذا البحث إلى دراسة تأثير أسمدة النانو للنيتروجين والتقليدي منها على نمو ومحصول الخس. أجريت تجربة أصص في تربة رملية لتقييم تأثير النيتروجين المحمل على الزيوليت المعدل والأسمدة التقليدية على الخس. تمت إضافة معاملات 100 و 75 و 50 و 25٪ من الجرعة الموصى بها من سماد النيتروجين العادي و 100 و 75 و 50 و 25 مل من 1000 جزء في المليون من محلول النانو نانو بمفردها أو بالاشتراك مع الأسمدة التقليدية لنباتات الخس. تم تسجيل صفات النمو الخضري والمحصول. أشارت النتائج المتحصل عليها إلى أن استخدام N-Nano أدى إلى ارتفاع معنوي في معاملات نمو الغطاء النباتي مثل الوزن الرطب للنبات (PFW) والوزن الرطب للنبات (SFW) وطول النبات (PL) ومساحة الورقة (LA) والوزن الجاف للنبات. يمكن أن يكون الاستبدال الجزئي للأسمدة N الشائعة بإضافة أسمدة نانو لإنتاج نباتات الخس طريقة مفيدة لتوفير كمية الأسمدة الشائعة N وتعزيز نمو النبات وزيادة امتصاص العناصر الغذائية من قبل النباتات وتجنب ترشيح النترات خاصة تحت التربة الرملية والأراضي الرملية. وبالتالي تقليل مشاكل التلوث.